

# HALL 3

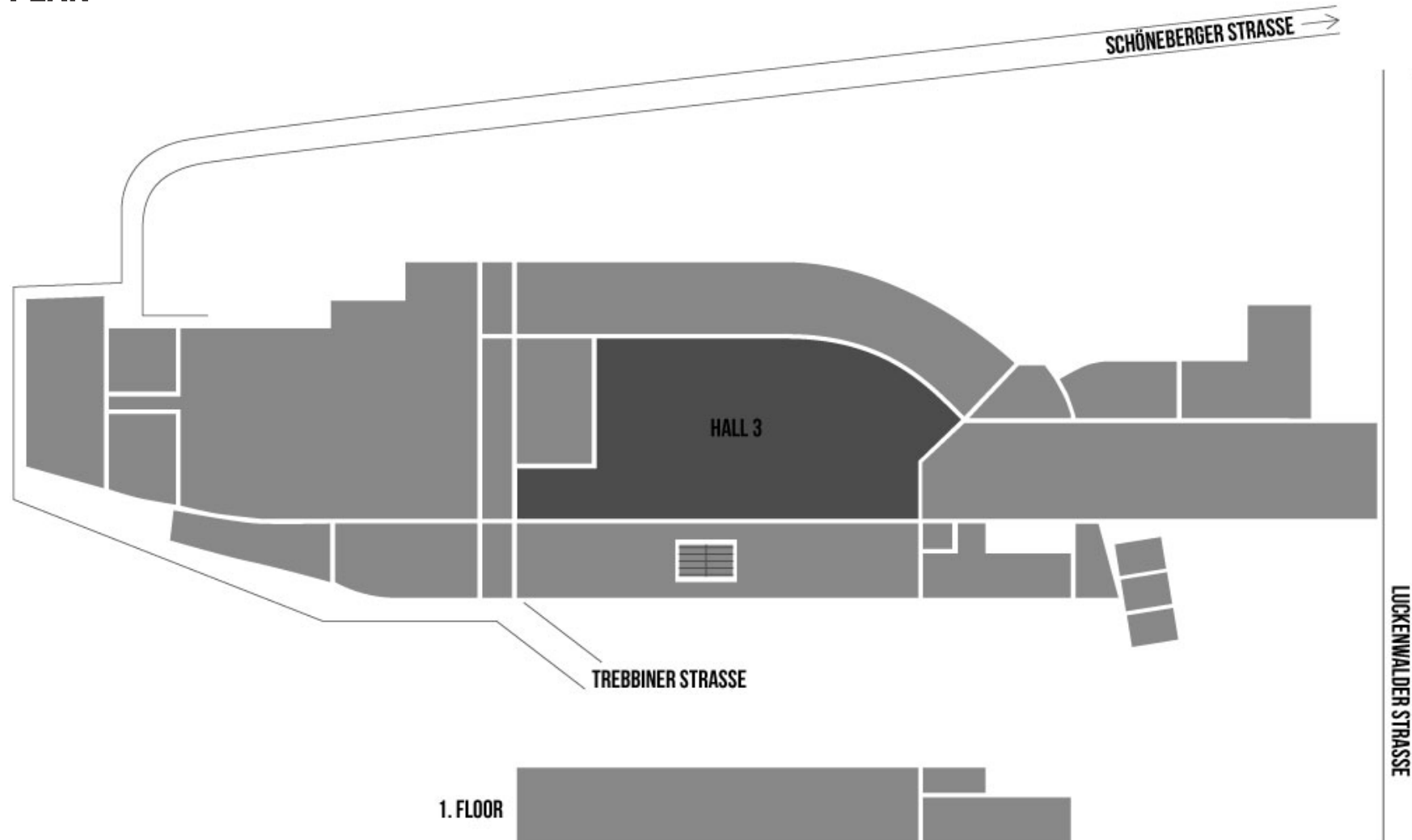
STATION-BERLIN | EIGHT HALLS, 23.000 SQUARE METRES OF SPACE. INFINITE POSSIBILITIES.



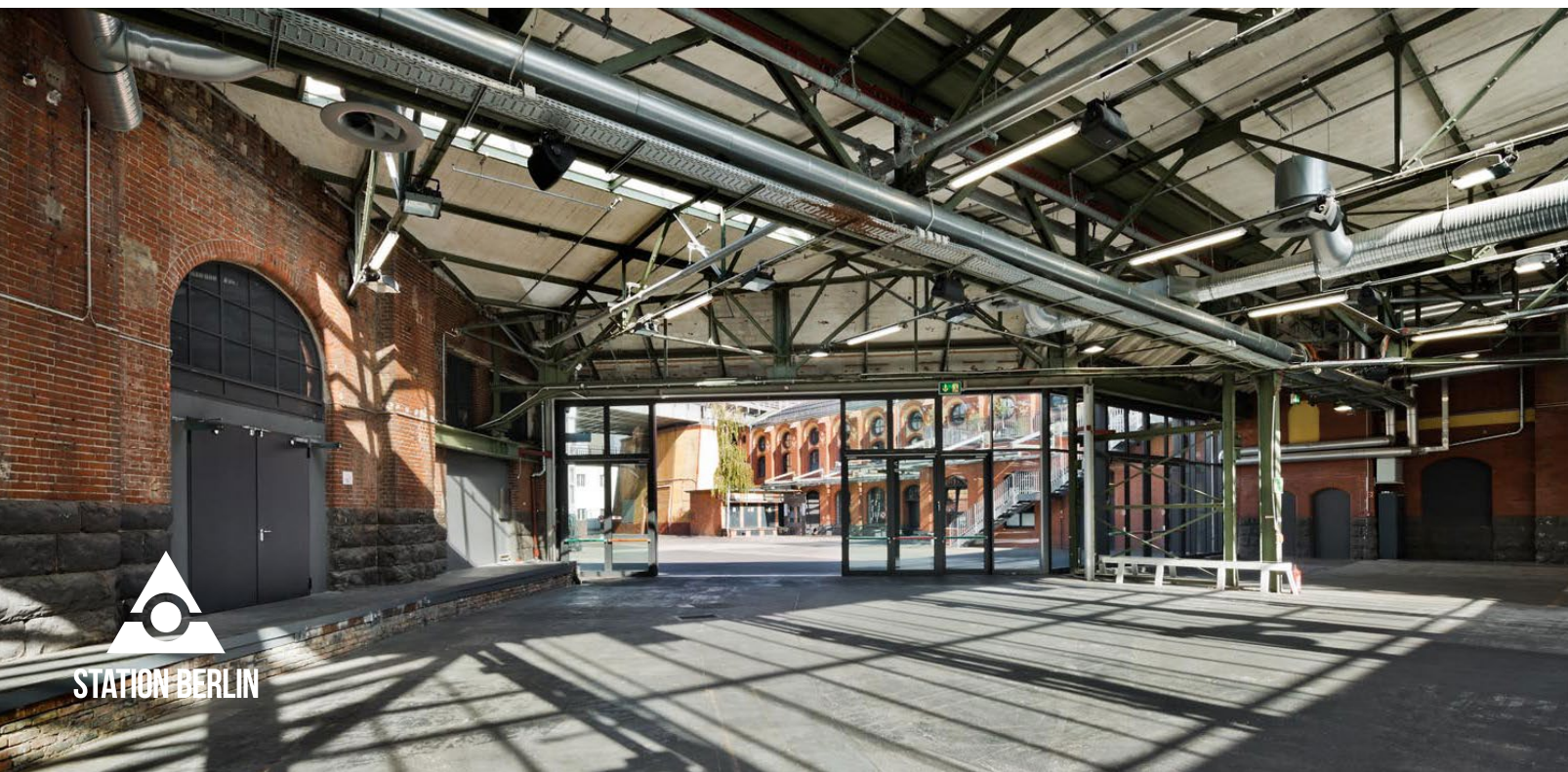
STATION BERLIN

# HALL 3

## GROUND PLAN







# HALL 3

## INFO

Hall 3 is the centerpiece of STATION-Berlin. The former courtyard of the historic postal train station presents itself as an open, light-flooded and spacious area. With a space of around 4,200 square meters, it offers ideal conditions for various event formats.

The impressive glass front facing the courtyard enhances the spectacular atmosphere and allows exciting views in and out.



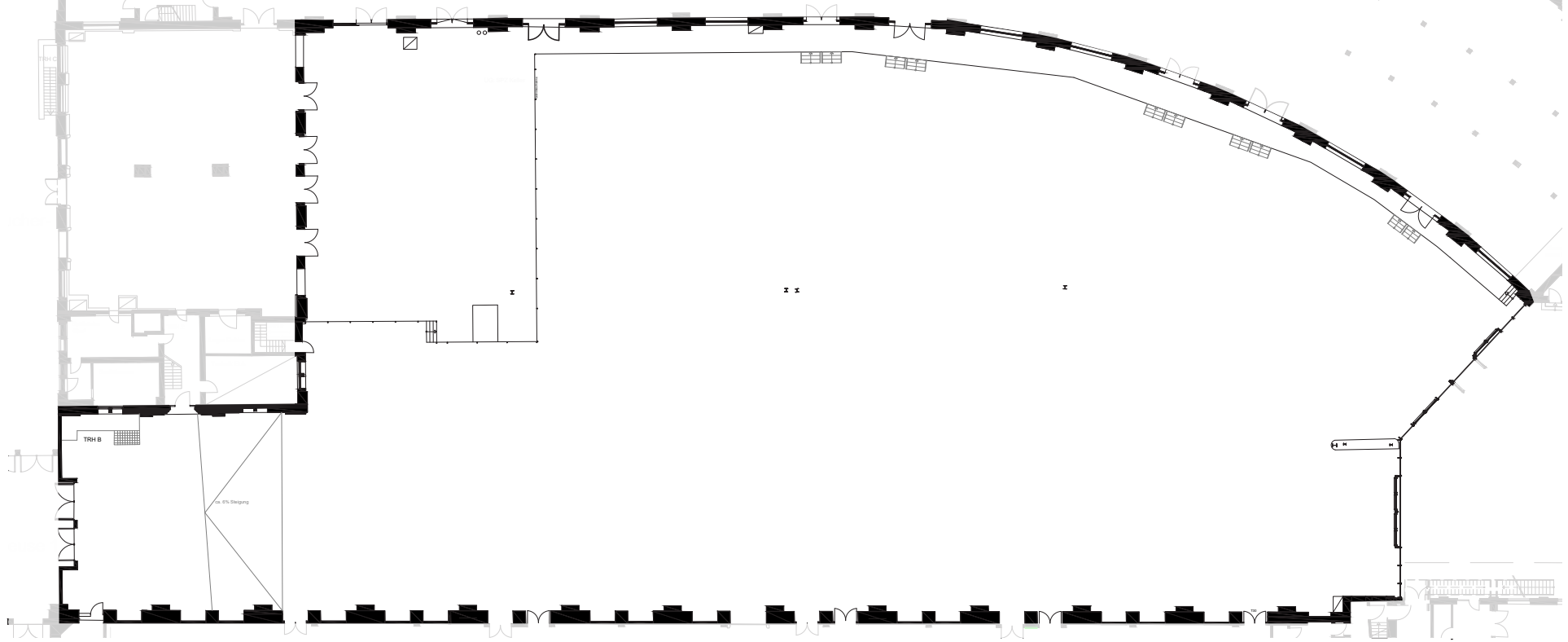


# HALL 3

## USE

Hall 3 is connected to the adjacent halls by direct entrances, enabling flexible space combinations. Perfect for modular concepts or large-scale events. Thanks to its wide glass façade, it is ideal for event formats that include use of the inner courtyard – particularly attractive in the summer months.





# HALL 3

## FACTS

|                     |              |
|---------------------|--------------|
| Floor space         | 4.200 sqm    |
| Dimensions          | 110 x 48 m   |
| Clearance height    | 10,80 m      |
| Lamp height         | 5,35 m       |
| Main beam height    | 4,90 m       |
| Level               | Ground Floor |
| Barrier-free access | Yes          |
| Disabled toilet     | No           |

## SEATING\*

|                 |                |
|-----------------|----------------|
| Theatre         | 2.300 Seats    |
| Banquet         | 1.650 Seats    |
| Without seating | 3.200 Standing |

\*Reference point. The maximum room capacity depends on the specific room concept and has always be considered individually.

## OTHER

|                             |          |
|-----------------------------|----------|
| Power                       | Yes      |
| Water                       | Yes      |
| LAN/WiFi                    | Yes/Yes  |
| Truck/car access (via ramp) | Yes/Yes  |
| Heating/Cooling             | Yes/Yes  |
| Blackout                    | Optional |